

# Cool Tree House

Follow the path from **Start** to **Finish** to get from the bottom of the tree to the tree house.

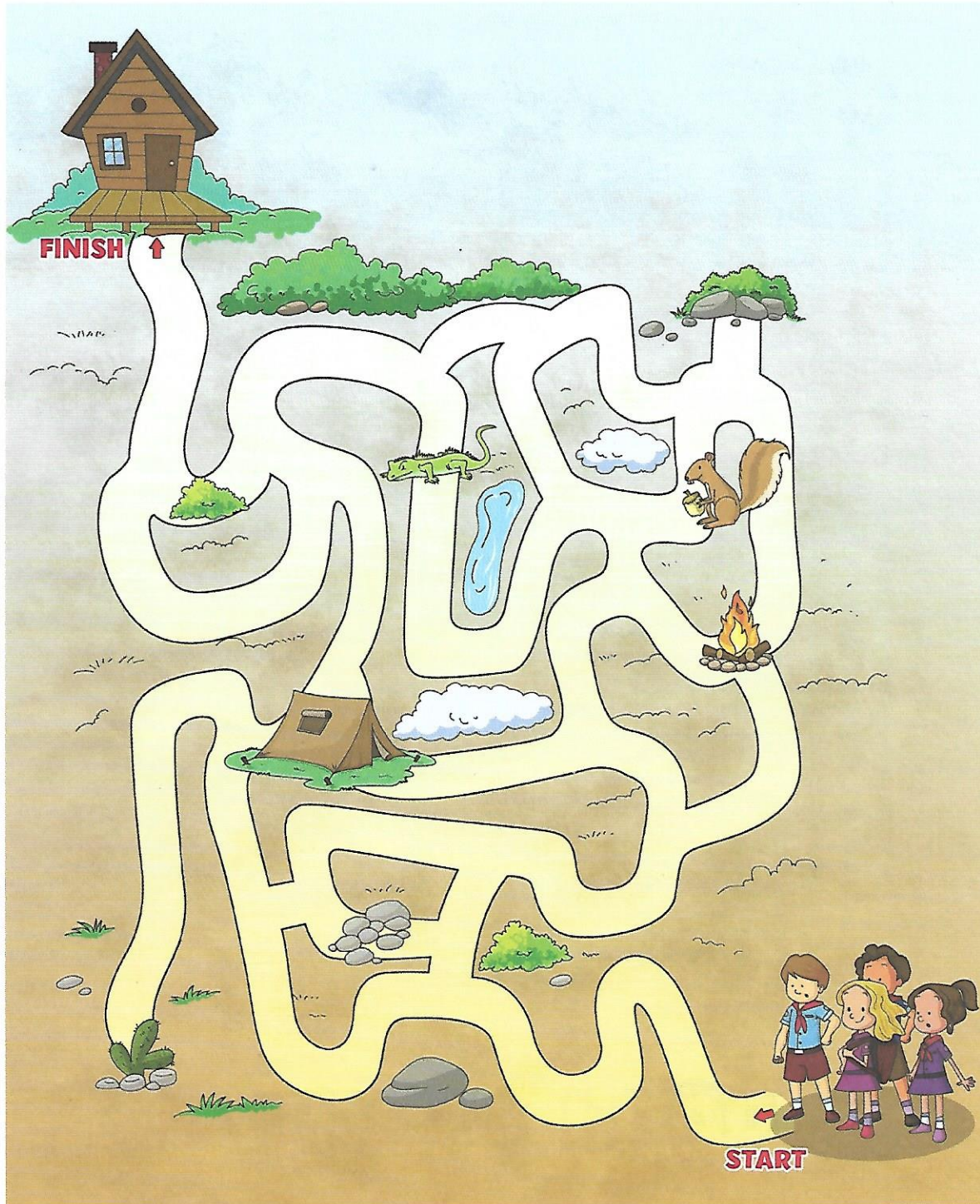
Contact Dolores for answers (dmiller@allsouls.ws)



# Campground

It's beginning to get dark out and these campers are looking for their cabin. Help them find the cabin by following the path from **Start** to **Finish**.

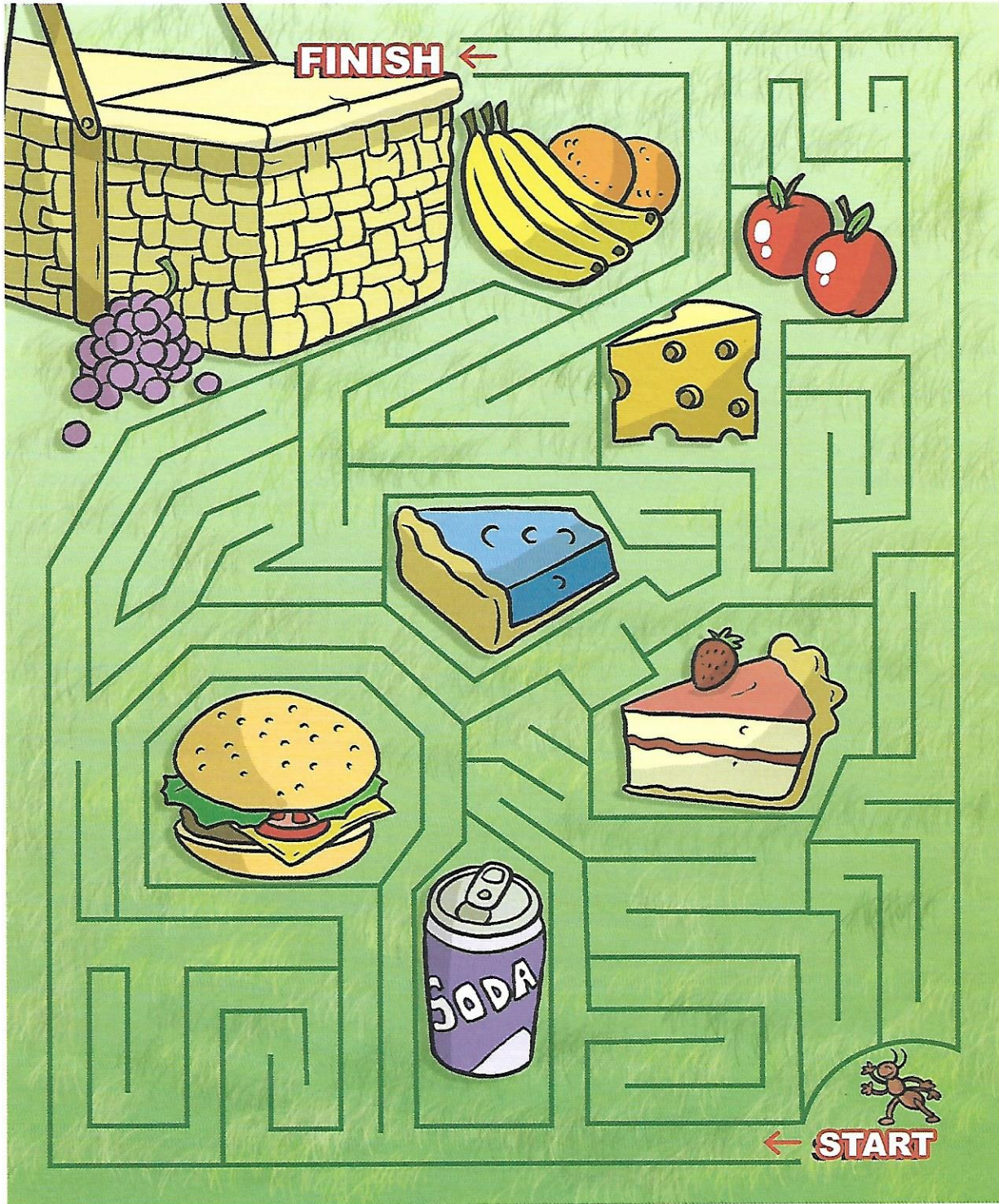
contact Dolores for answer (dmiller@allsouls.org)



# Picnic Time

Follow the path from **Start** to **Finish** to help the ant get to the picnic basket.

Contact Dolores for answer ([dmliller@allsouls.ws](mailto:dmliller@allsouls.ws))



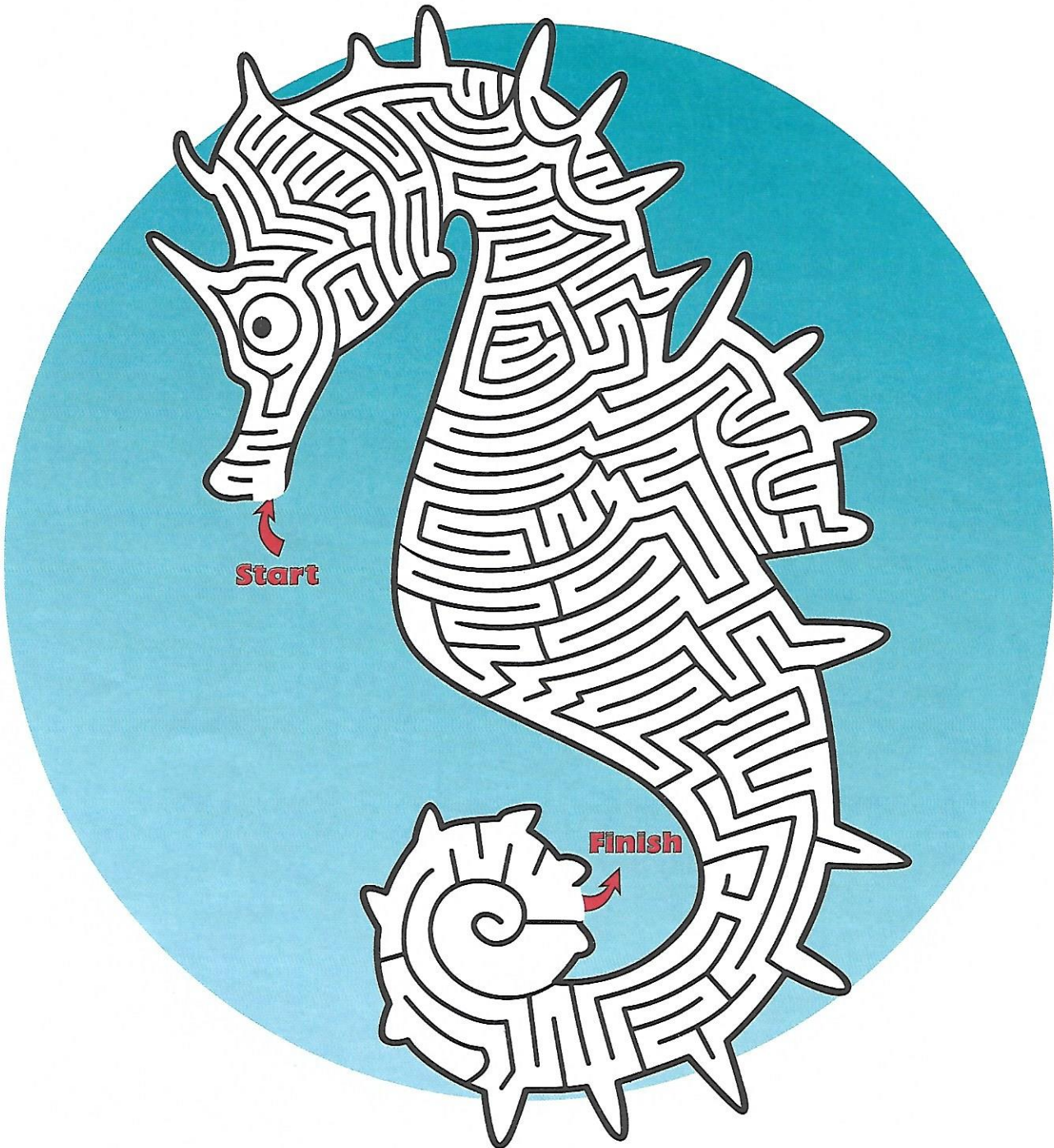
Copyright © 2012 Kidsbooks, LLC

ANSWER ON BACK

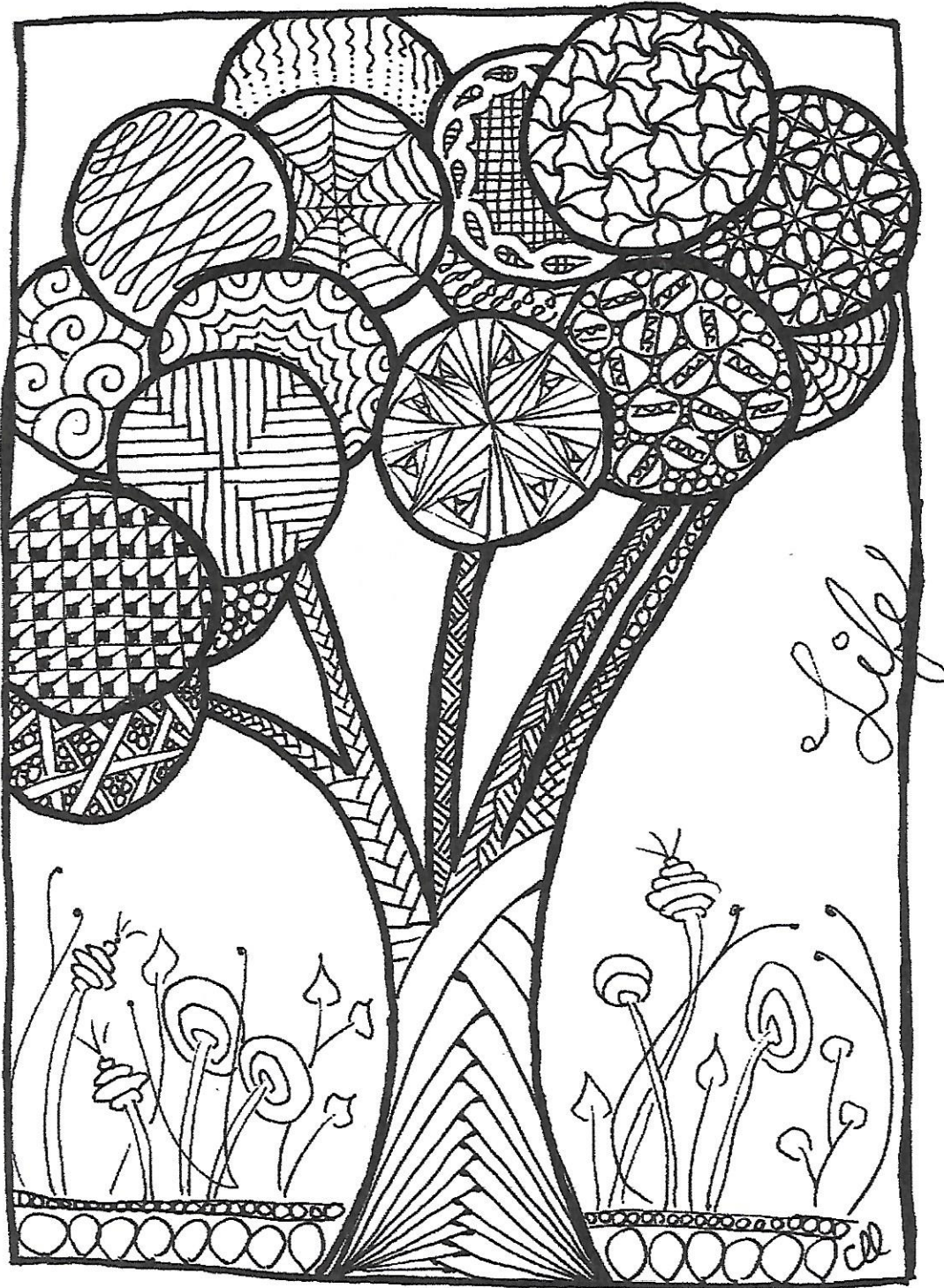
# Silly Sea Horse

Follow the path from **Start** to **Finish** to get through the sea horse.

Contact Dolores for answers ([dmiller@allsouls.ws](mailto:dmiller@allsouls.ws))







All theory, dear friend, is gray,  
but the golden tree of life springs ever green.

— JOHANN WOLFGANG VON GOETHE