

# Lucky Number 18

Going from **Start** to **Finish**, choose the path made up of the number **18** only. You cannot go diagonally.

**Start** 

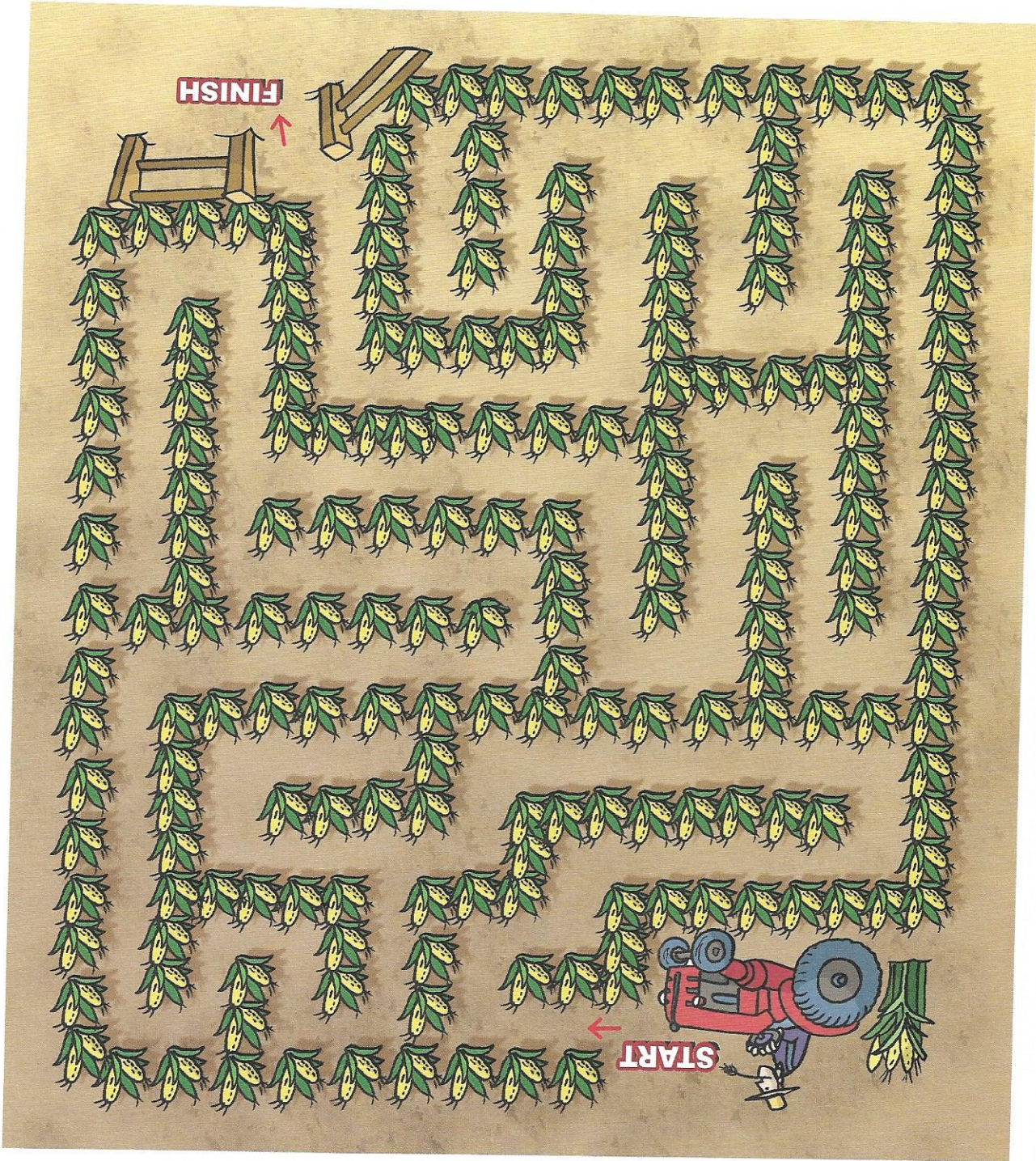
18	12	13	18	19
18	12	12	18	14
15	15	12	18	17
13	14	12	18	18
19	17	18	18	17
17	12	18	15	14
18	18	18	13	19

**Finish** 

ANSWER ON BACK

# Cornfield

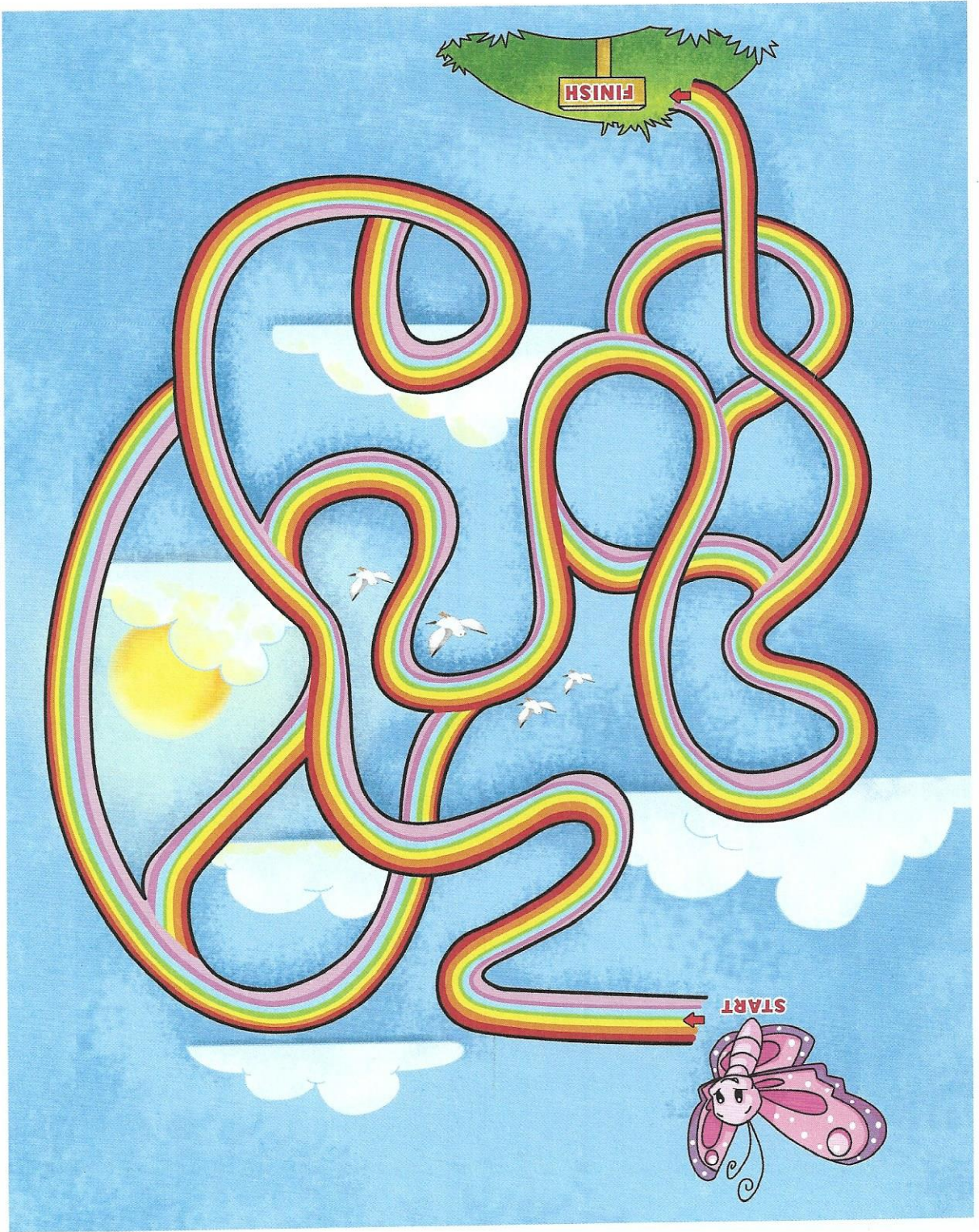
Follow the path from **Start** to **Finish** to help the farmer get through the cornfield.



# Puppy Path

Follow the correct path through the maze to get the dog to the bone. What's the correct path, you ask? It's the one that is made up of paw prints only! You cannot go diagonally.

The maze consists of a 10x8 grid of cells. The puppy is located at the bottom-left corner (row 10, column 1). The bone is located at the top-right corner (row 1, column 8). The path is defined by brown paw prints. The correct path starts at the puppy, moves right to (10, 2), then up to (9, 2), then right to (9, 3), then up to (8, 3), then right to (8, 4), then up to (7, 4), then right to (7, 5), then up to (6, 5), then right to (6, 6), then up to (5, 6), then right to (5, 7), then up to (4, 7), then right to (4, 8), then up to (3, 8), then right to (3, 7), then up to (2, 7), then right to (2, 6), then up to (1, 6), then right to (1, 5), then up to (1, 4), then right to (1, 3), then up to (1, 2), then right to (1, 1) where the bone is.

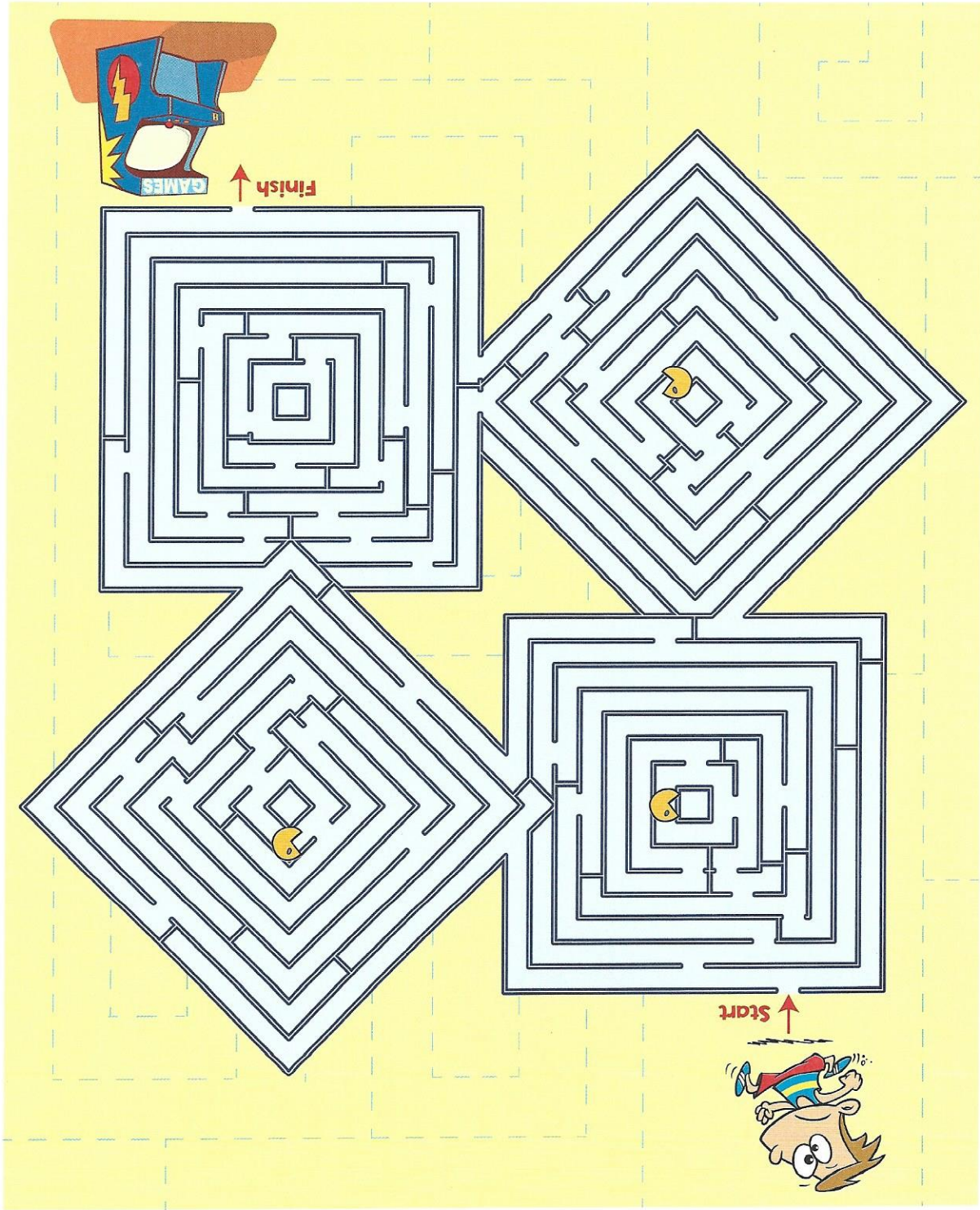


It's a bird, it's a plane—wait...it's a butterfly!  
 Help the butterfly get to the grassy field by following  
 the path from **Start** to **Finish**.

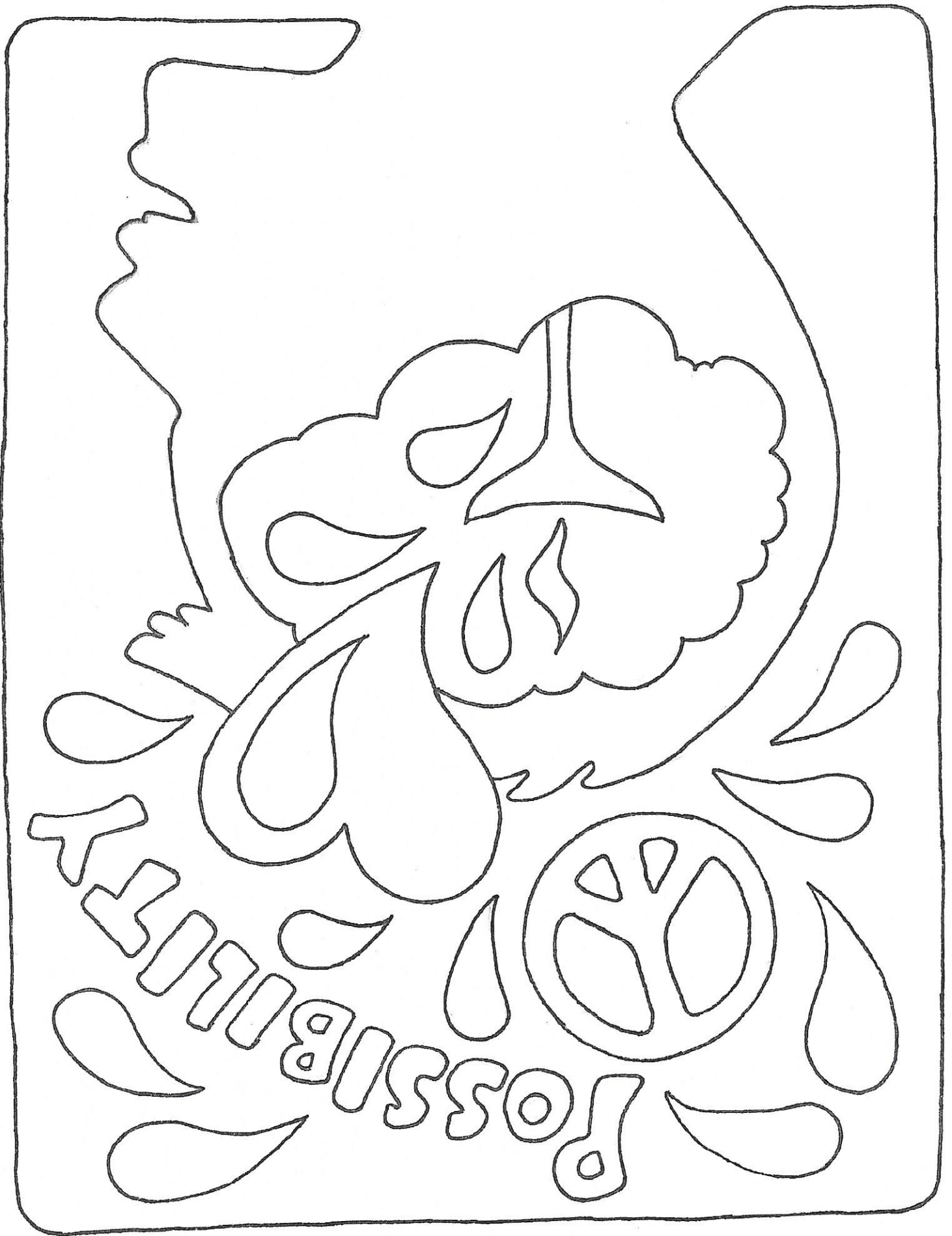
# Rainbow

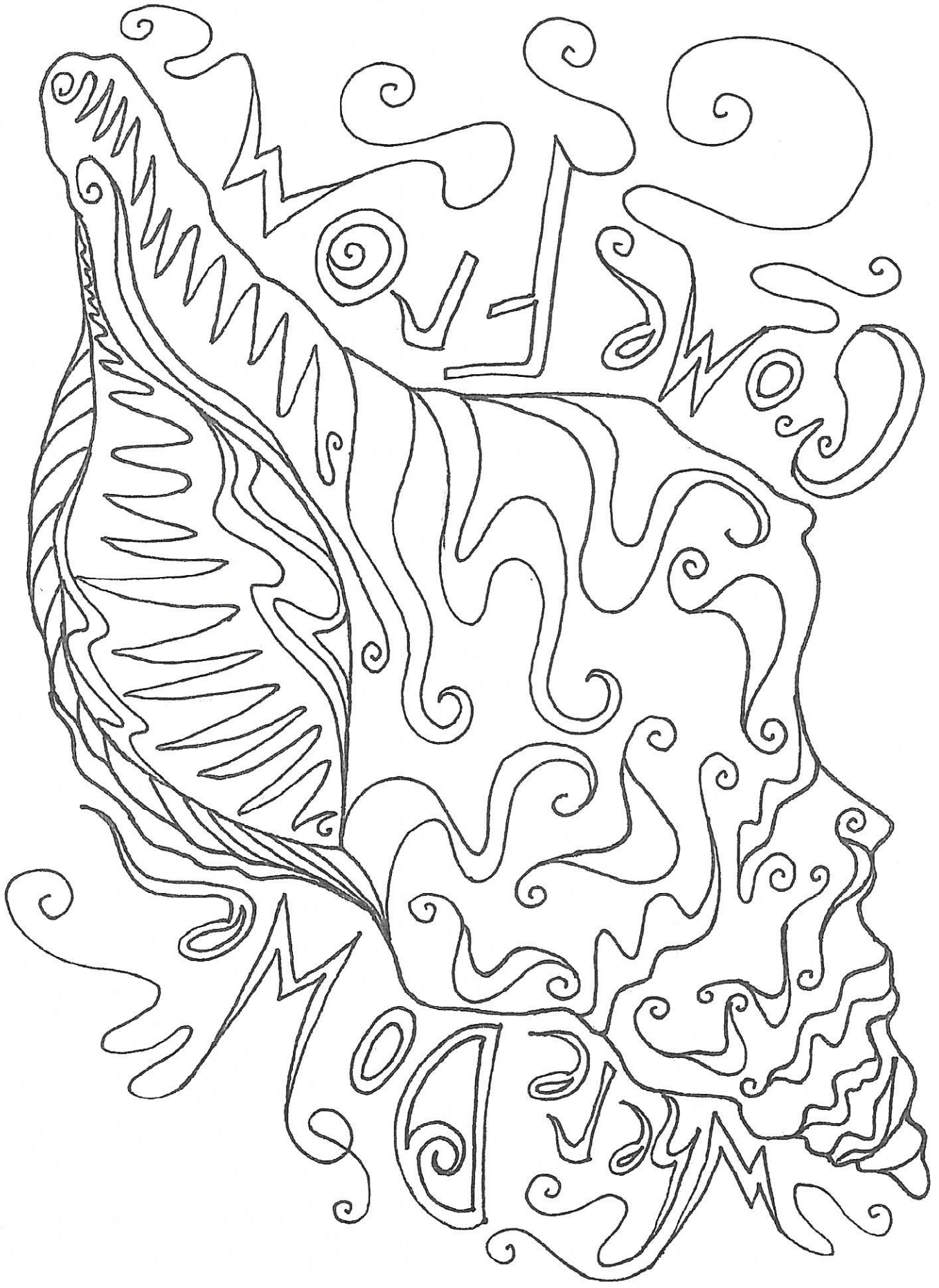
# Arcade Machine

Help the boy get to the arcade machine by following the path from **Start** to **Finish**.



ANSWER ON BACK





All theory, dear friend, is gray,  
but the golden tree of life springs ever green.  
--JOHANN WOLFGANG VON GOETHE

